



WELCOME TO

SUPER KIDS

YOUR HOME AWAY FROM HOME

**A BRIEF
OVERVIEW OF
OUR PROGRAM**

A FAMILY-RUN EARLY LEARNING CENTRE FOR OVER 20 YEARS

Our EYFS curriculum is
curated to meet the learning
needs of children from
6 months to 4 years old

Come say hello! :)

CALL :

+97155 6171 543 | +9714 288 1949

MORE CONTACT INFO:

info@superkidsnursery.com

WHATSAPP INFO:

+97155 6171 543

WEBSITE:

www.superkidsnursery.com



Infant Program



Physical Development

This is one of the major infant milestones we focus on. Our activities will support your infant to develop their bodies, improve their mind-muscle connection, and be on the move in no time!



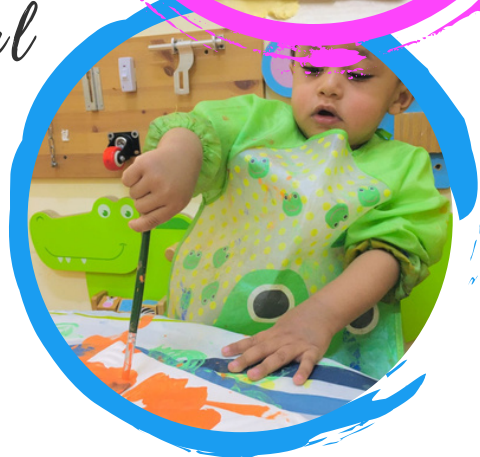
Communication & Language

By 18 months old, your infant will have achieved recognized milestones in this area. Saying up to 10 words, following simple instructions, understanding body parts, expressing themselves are some, but not all of the progress they would have made.



Personal, Social, Emotional

As an infant's PSE levels are constantly developing, our program supports them to flourish. Basic instructions like sharing, or associating their water bottle to the water bin, being able to understand emotions through facial expressions are some of the things our program will support your infant with.





Toddler Program



Physical Development

Your toddler is on the move! With arms and legs ready to let loose, it is crucial that your toddler is provided with ample space to run and explore. Our outdoor area and sports activities will help with their gross-motor development.



Communication & Language

To further support the capabilities of a talking toddler, our program will introduce them to a wide variety of tools/activities to further improve their communication and language development.



Personal, Social, Emotional

As your toddler's brain develops, they begin to show stronger empathy and emotional regulation. Their personality is also developing more rapidly. Our nursery will hone in on their natural trajectory, and provide them with a safe space to be who they are, and to continuously guide them positively.





Physical Development

With stronger arms, legs, and a more defined control over their movements, your preschooler will indulge in a variety of physical activity. Obstacle courses, larger playground, 2 wheeled scooters, and so much more will ensure your child is getting the development they require.



Communication & Language

As we gear up for their next milestone: Fs2, our Fs1 program focuses on their linguistics, reading, and writing in-depth.



Personal, Social, Emotional

We work closely with our students to develop their Emotional Intelligence (EQ). This is done through community building activities, real-life skills, and our unique approach to education. We strongly believe happy children grow up to be happy adults!



OUR SPACE

A MINDFUL LAYOUT TO GIVE YOUR CHILD ROOM TO EXPLORE



LARGE SHADED PLAYGROUND



GARDENING AREA



SENSORY AREA



SHADED CYCLE TRACK AREA



AND SO MUCH MORE!

READY TO BOOK A TOUR? CALL US TODAY!

FEES

Termly Fees (AED)

*We offer easy payment plans for Termly Commitment

T e r m 1 (Sept-Dec), T e r m 2 (Jan-Mar), T e r m 3 (Apr-June)

* **ONE-TIME** Registration fee of AED 1000 upon registration

8am to 1pm	8am to 3pm	8am to 5pm
8500	10,000	11,000

Early Drop-Off Options (AED): Starts from **7:15am**

Daily (Per Day)	Monthly	Termly
35	300	750

Flexible Fees (AED)

*Priority will be given to Termly Commitment

Per Day

8am to 1pm	8am to 3pm	8am to 5pm	2pm to 5pm
175	200	250	125

Weekly

8am to 1pm	8am to 3pm	8am to 5pm	2pm to 5pm
850	950	1000	500

Monthly

8am to 1pm	8am to 3pm	8am to 5pm	2pm to 5pm
3200	3600	4000	1500

* Please contact us for more information on **discounted packages** and **flexible timing options**

Transport Per Month (AED)

*Price is subject to change

Area	One-Way	Two-Way	Package Deal!
Mirdif	500	700	Pay termly and get AED 100 off total price!
Al Warqa/ Madinat	600	800	
Muhaisnah/Mizhar 1	700	900	
International City	950	1250	
Other	Subject to location		

Please note: Our academic year runs from September to June. We are open in July and August for Summer Camp. We take a small winter break in December, and a spring break in March/April.

*Subject to the number of enrolments, we provide a winter and/or spring camp at an additional cost.

Terms and conditions for Termly Fees:

- Easy installment plans and flexible options. Please speak to management. T&C apply.
 - There will be NO REFUND OR TRANSFER OF FEES for any absence, sick time, holidays or any other reason in the on-going month or term.
- All enrollments are on a first come basis and all payments need to be paid in advance to reserve the spot
- Discontinuation notice: A one-month notice needs to be given in writing to avoid being charged for the next term
- All payments to be made in advance by Cash or cheque. 2% admin fees are charged if payment is made by credit or debit card.
- If direct deposit is made, proof of deposit has to be given to confirm the receipt of payment
- If a child joins in the middle of the term, all fees will be prorated accordingly
- If fees are not received in time, the nursery reserves the right to offer your child's place to another child
- No fees will be increased within the Academic Year
- In exceptional cases the nursery may request discontinuation if a child cannot be provided with the developmental support needed for the child
- Pick up is at 11:30am on Fridays

Terms and conditions for Flexible Fees:

- Weekly fees are from Monday to Friday. If a child joins in the middle of the week, they will be charged the per-day fee and then be shifted to weekly fees from the next week.
- Monthly fees are from the beginning calendar day of the month to the end calendar day of the month. If a child joins in the middle of the month, their fees will be prorated on a weekly/daily basis till the end of the month.
- All fees are non-transferable and non-refundable.
- If a child is on a no-commitment package, there is no guarantee that their seat will be reserved or booked after they have used what they have paid for.
- First-preference will always go to children on a Termly (committed) package. Non-committed spaces will be available on seats available and a first come basis